



TRISUL

TRISUL IPDR SOLUTION FOR DOT COMPLIANCE 2024

TRISUL NETWORK ANALYTICS

<https://www.trisul.org/>

CONTACT US

info@unleashnetworks.com



DoT/TRAI Compliance Guidelines

The Compliance letter from DoT/TRAI of guideline No 8520-01 /98-LR/Vol. (IX) Pt.I. dated 16.11.2021 describes the responsibilities of all ISPs to store and maintain all NAT and IPDR logs with the parameters described for their network.

Trisul IPDR Solution Overview

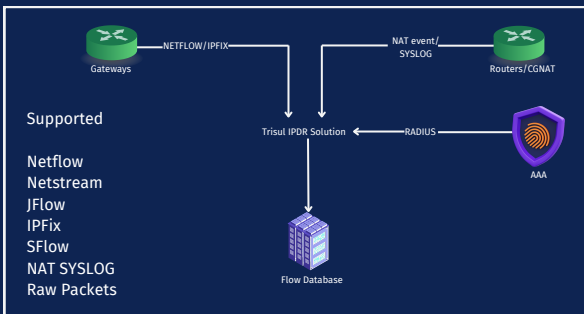
Trisul Network Analytics IPDR solution enables Internet Service Providers (ISPs) in various jurisdictions to store complete logs of IP flow activity along with other details ensuring compliance with regulatory mandates.

Key Features

Trisul Network Analytics IPDR solution helps ISPs of all sizes comply with regulatory compliance requirements at minimal cost. It offers Full flow record compliance for ISPs with NAT and AAA syslog integrations.

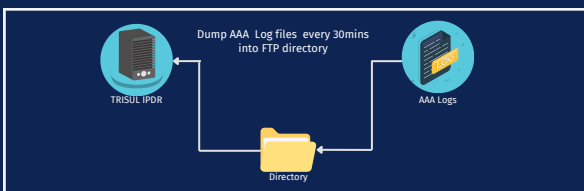
- Full DoT Compliance solution.
- Flow records from Netflow/IPFIX/Syslog or raw packet capture.
- Full support for IPv4 and IPv6.
- NAT Syslog and AAA integration to pull in NAT and User-ID information.
- Best compression technology for the most efficient storage.
- Self-service portal with secure FTP support.
- Integration with customer database for static IP details.

Solution Architecture



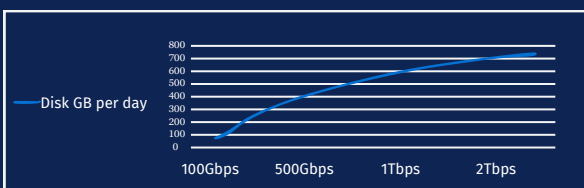
Trisul IPDR is a software solution that uses the following inputs

- NETFLOW or IPFIX for flow logs
- SYSLOG for NAT and flow logs
- AAA for user information

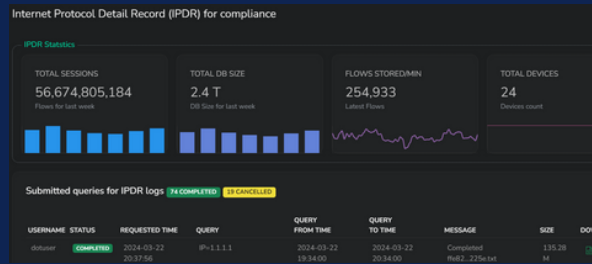


Lowest Cost Storage Architecture

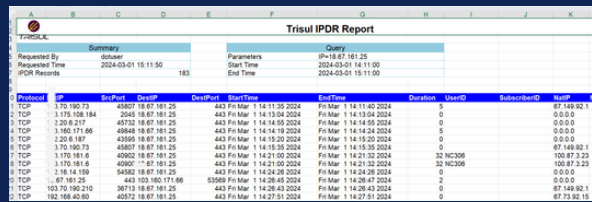
Trisul IPDR solution utilizes cutting-edge compression and deduplication techniques, achieving the lowest storage cost per flow. It supports exceptionally large databases, scaling up to hundreds of Terabytes, while maintaining fast log query response times. It also features support for offline storage such as tape archives.



Easy To Use Interface



- Enter the IP and the time window; submit multiple IPs at once.
- Download and save the results in the Excel format prescribed by the DoT and Law Enforcement Agencies.
- Automatically upload results to secure FTP.



Fully compliant Excel output

Fields Collected And Stored Per Flow

Trisul IPDR collects and stores the precise data essential for IPDR Compliance. It excludes unnecessary fields, thus minimizing disk storage needs. The collected fields are sufficient for DoT Compliance, ensuring comprehensive adherence.

| | |
|-------------------------|---|
| Flow Start Time | start timestamp of flow (upto the second) |
| Flow End Time | end timestamp |
| Source IP Address | Source IPv4 or IPv6 address |
| Source Port | Port |
| Destination IP Address | Destination IPv4 or IPv6 address |
| Destination Port | Port |
| Post-NAT Source Address | Translated Source Address |
| Post-NAT Source Port | User-ID from AAA |
| User-ID | Translated Source Port |
| Router IP | (optional) Router IP reporting this flow |
| Source MAC Address | (optional) Source MAC address of device |

Licensing

Trisul IPDR operates under a simple perpetual license model. The license scale corresponds with the total aggregate throughput of the Internet Service Provider (ISP). We also offer a cloud service for small ISPs.

Simple Deployment

Trisul IPDR is a secure Linux-based software suite deployed on customer-provided server and storage infrastructure. All network elements are then configured to send Netflow, SYSLOG, and AAA information to the system. In the cloud scenario, the customer simply sends the logs through a secure tunnel interface. Trisul IPDR can be deployed in fault-tolerant primary-secondary mode as well.

Getting Started

For a small ISP of less than 10Gbps total throughput here are the minimum system requirements 16GB RAM / 1TB HDD for 2 months retention/ Ubuntu 22.04

Contact us at info@unleashnetworks.com or the website https://trisul.org we can help you set up and go live remotely in under an hour.